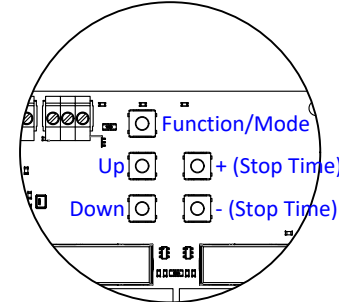
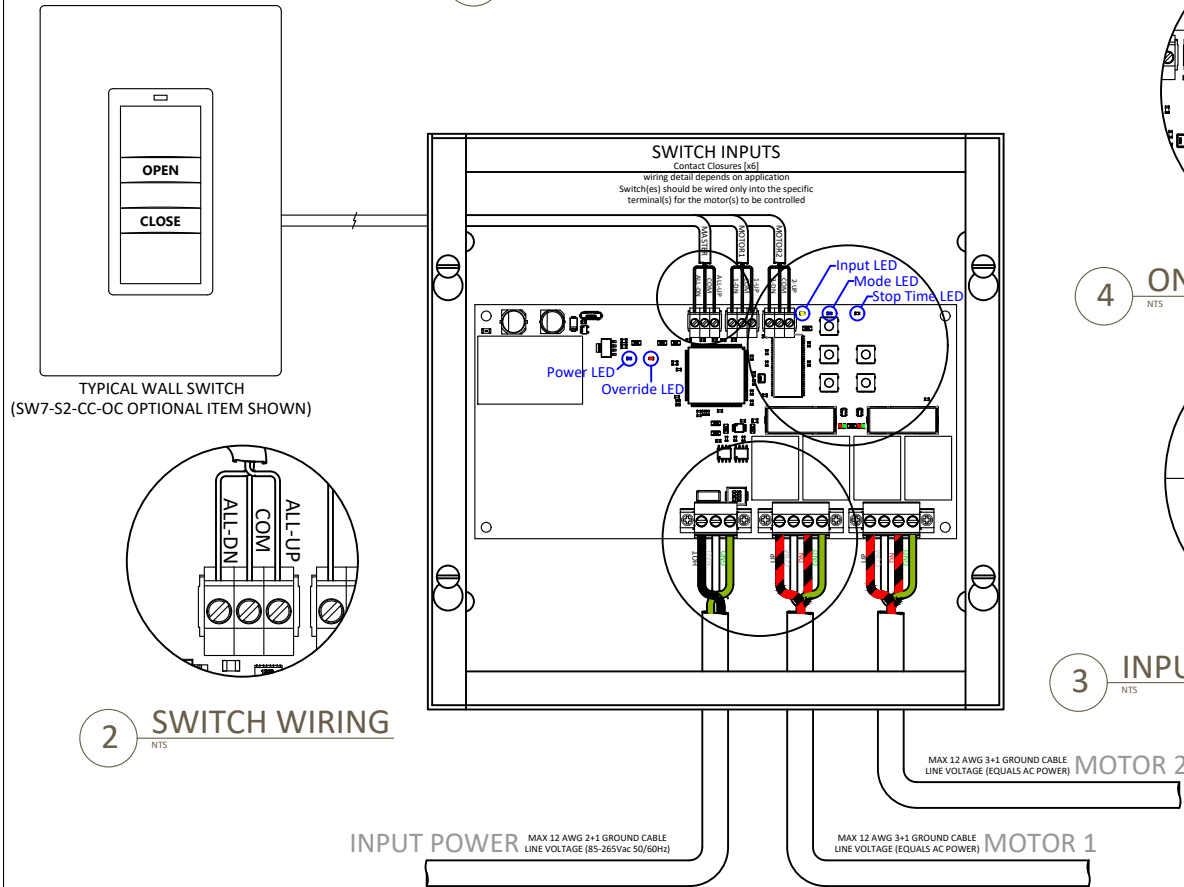
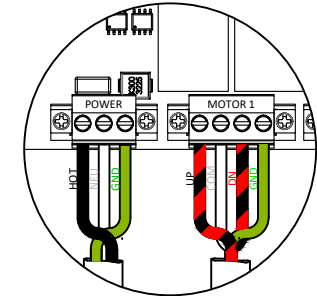


1 EM2 GENERAL WIRING DIAGRAM
NTS

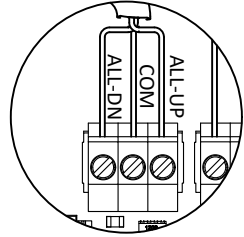


4 ONBOARD BUTTON DETAIL
NTS



3 INPUT/OUTPUT POWER WIRING
NTS

2 SWITCH WIRING
NTS



Onboard Button Operation	
UP / DOWN	Operate ALL Motors NOTE: holding both for >10s will reverse polarity of the master input (N/O ↔ N/C)
FUNCTION	Change Operating Mode Standard ↔ Stops/Venetian hold >10s to toggle <i>Single Contact Stop</i>
Stop Time + / -	Increase/Decrease Stop Time in Stops/Venetian Mode (0.1s increments)

LED Operation	
INPUT	Blink: Switch Press Detected Off: Master input is in NO mode On: Master input is in NC mode
MODE	Off: Standard Mode On: Stops/Venetian Mode
STOP TIME (Single Contact Stop)	Off: Standard 2-Button Stop On: <i>Single Contact Stop</i> enabled Blink: Stop Time + 10s for each long blink (2.5s) + 1s for each medium blink (1s) + 0.1s for each short blink
OVERRIDE	On: Master Override Active Other inputs will be ignored until Master is released Off: All Inputs Operational

Operating Modes Contact Closure / Switch Functionality		
	Standard Mode	Stops/Venetian Mode
Tap	Move to Extent (Open / Close) Tap both contacts simultaneously to stop shade movement	Operate motor for programmed stop time
Hold (>2s)	Move while held (release to stop)	Move to Extent (Open / Close)

An optional *Single Contact Stop* feature allows a tap in the direction of motion to stop the motor in its current position.

Notes:

A. All wiring and connections should be completed by licensed electricians, in compliance with Local and State Code.

B. Input power to controllers to be 120 or 240VAC (matched to motor), 2 Conductor + ground cable (12 AWG max).

C. Output power to motors to be 120 or 240VAC as per input power, 3 Conductor + ground cable (12 AWG max).

D. **IMPORTANT!!** Exact motor wiring, specifically termination of RED and BLACK wires, depends on motor mounting configuration (i.e. left or right hand motor). When a combination of configurations is used, UP/DOWN wires may need to be swapped for individual motor outputs to function correctly with grouped switches. Wiring should be verified using the onboard buttons. All motors should operate in the same direction when operated from the onboard buttons.

TITLE
EM2 General Wiring Diagram

Drawing Status:
 ISSUED FOR DELIVERY

Drawing Status		
rev #	drawn by	issued
drawn by:	CO	
date:	2022-03-24	
drawing no.:	EM2-01	
scale:	NTS	

This drawing is the property of The Embedia Sales Corp. Any copies, reproduction, or distribution to third parties must only be done with formal consent from Embedia Sales Corp.